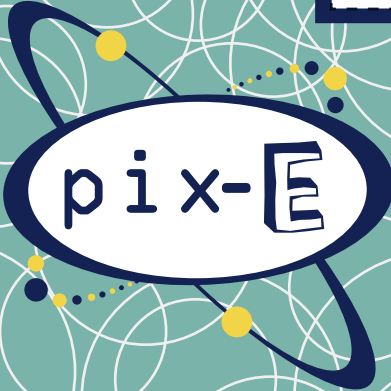
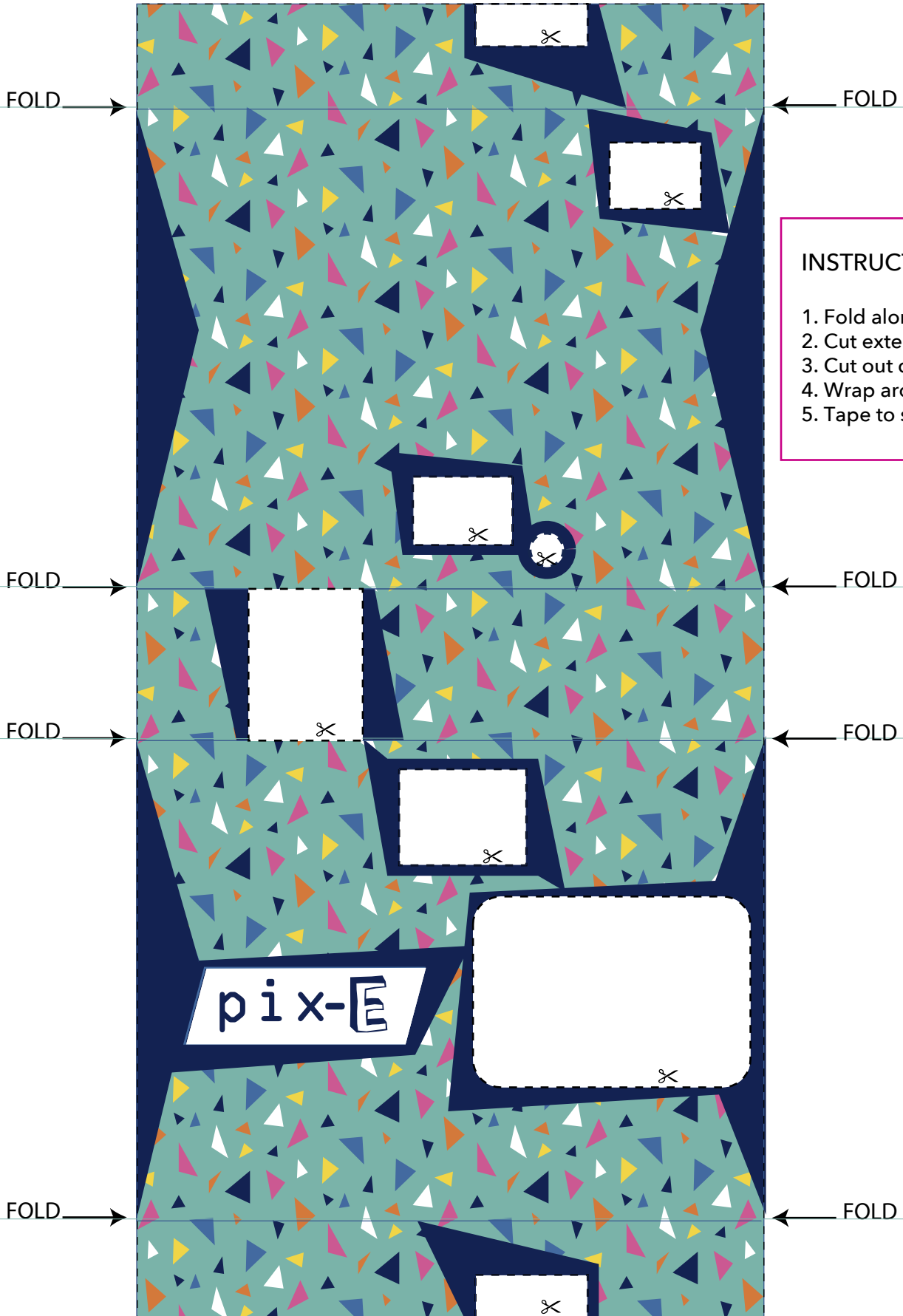


INSTRUCTIONS:

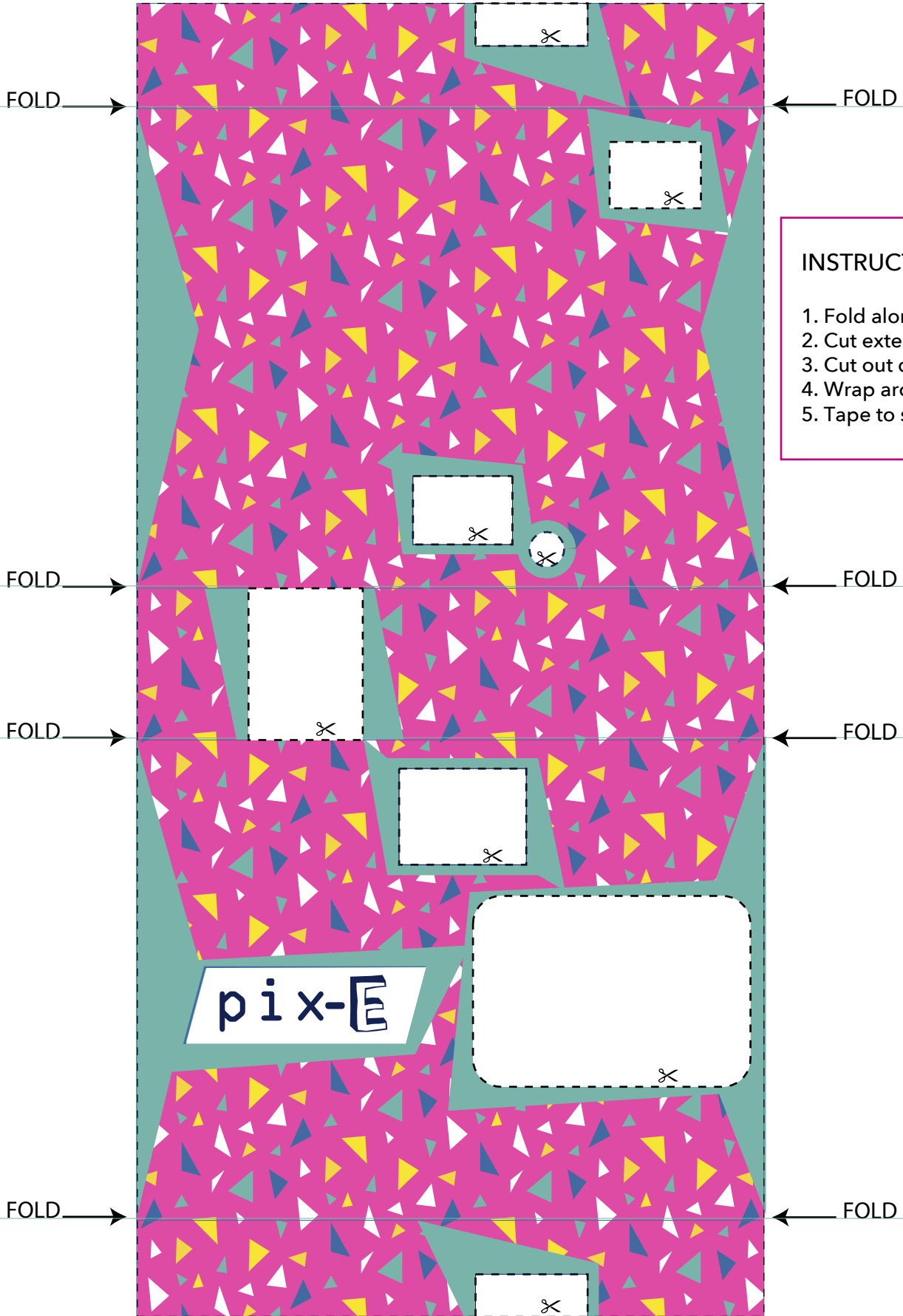
1. Fold along lines
2. Cut exterior edges
3. Cut out dotted lines
4. Wrap around Pix-E
5. Tape to secure





INSTRUCTIONS:

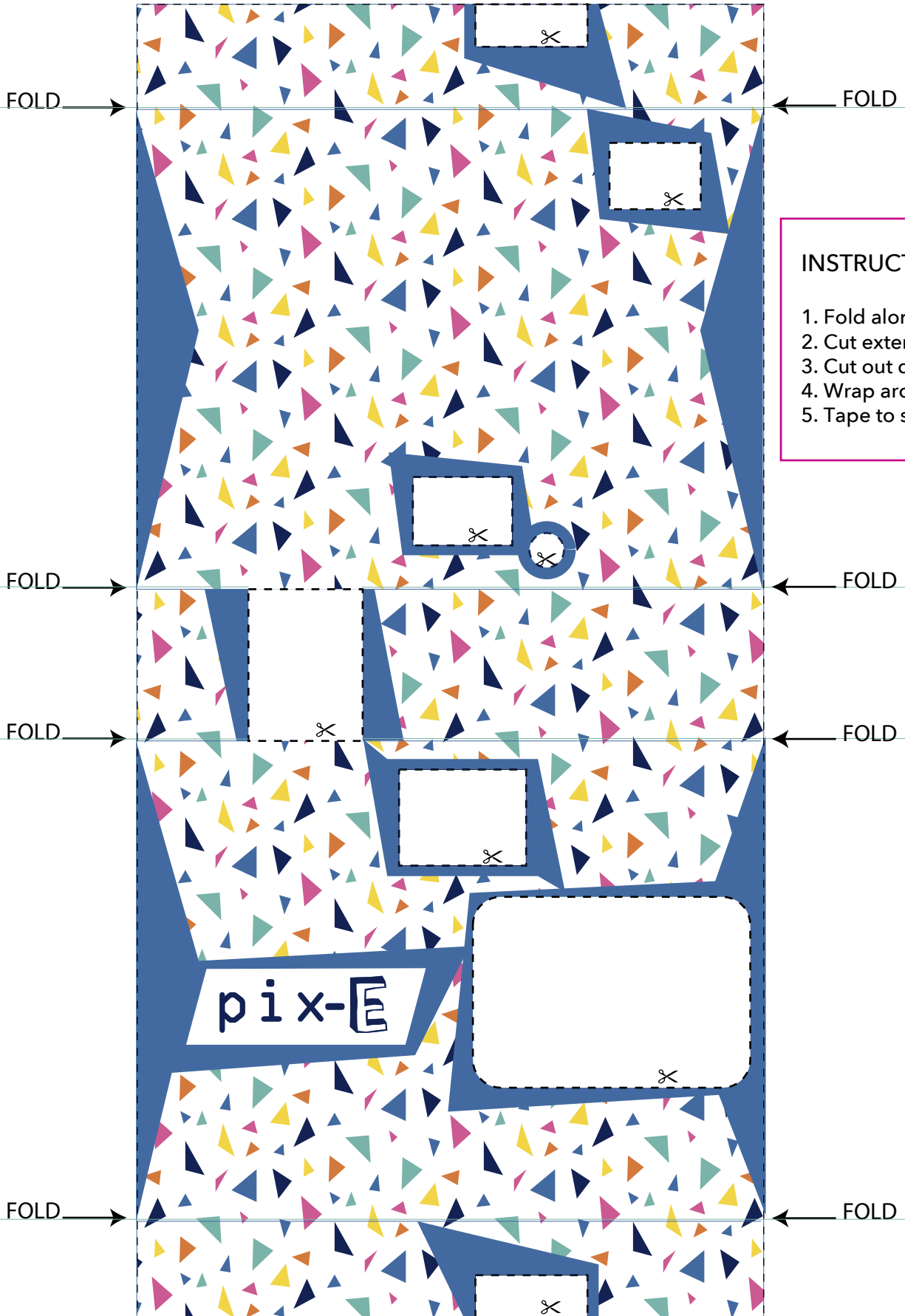
1. Fold along lines
2. Cut exterior edges
3. Cut out dotted lines
4. Wrap around Pix-E
5. Tape to secure



INSTRUCTIONS:

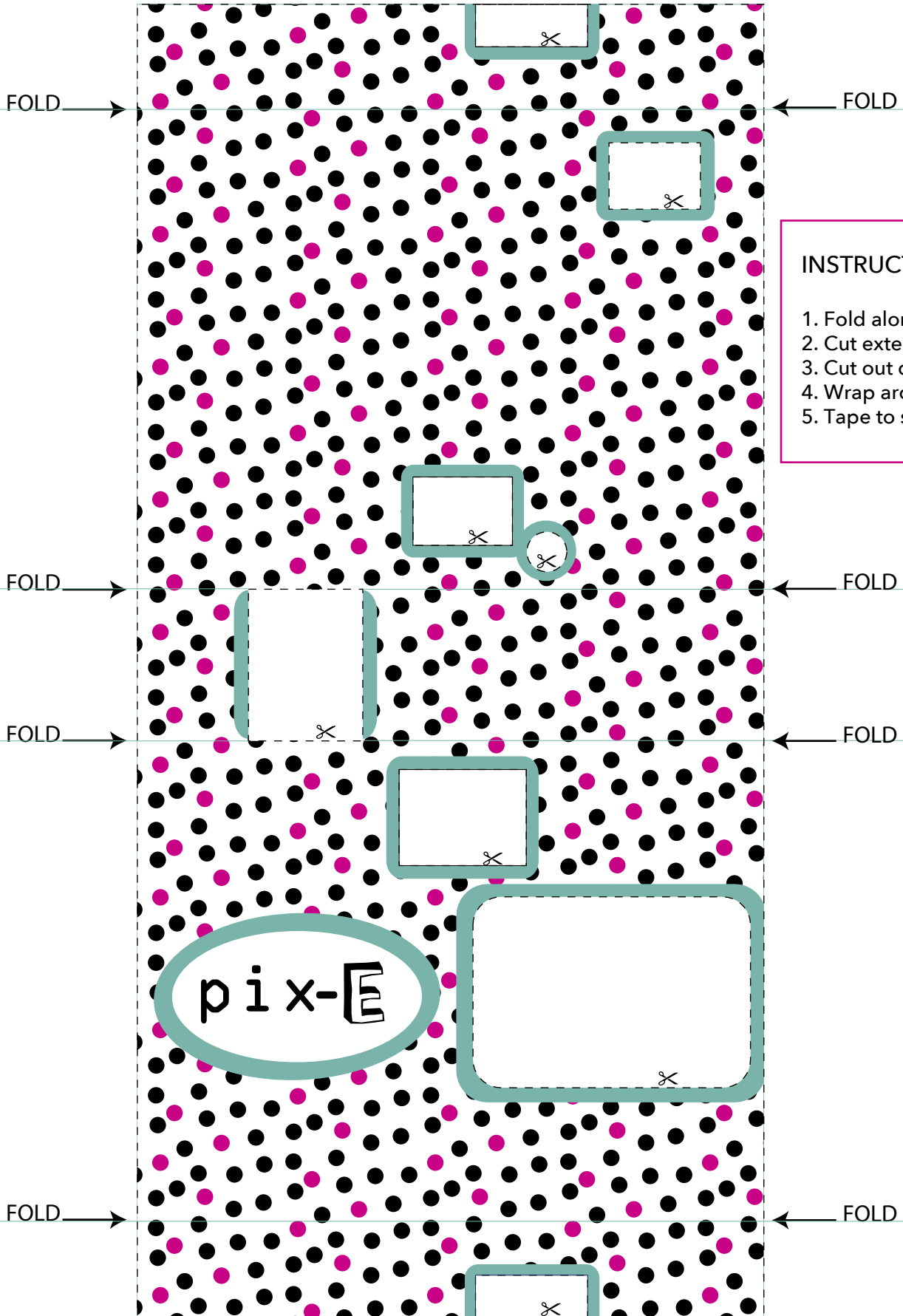
1. Fold along lines
2. Cut exterior edges
3. Cut out dotted lines
4. Wrap around Pix-E
5. Tape to secure

pix-E



INSTRUCTIONS:

1. Fold along lines
2. Cut exterior edges
3. Cut out dotted lines
4. Wrap around Pix-E
5. Tape to secure



INSTRUCTIONS:

1. Fold along lines
2. Cut exterior edges
3. Cut out dotted lines
4. Wrap around Pix-E
5. Tape to secure